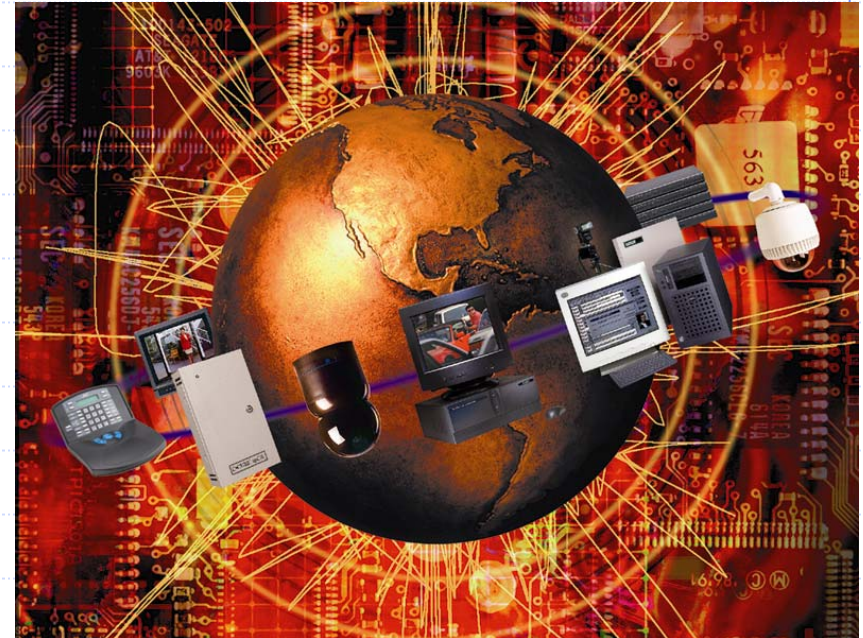




*JTS-LLC*



# **Innovative Security Solutions That Increase Force Protection Effectiveness**



*Security Management Solutions for the New Millennium*



*JTS-LLC*

## Components of the Force Protection Discussion

- ◆ Statement of understanding
- ◆ Mission statement
- ◆ Define threat components
- ◆ Security planning
  - ◆ Levels of protection and budget
  - ◆ Equipment and devices—what is the right mix?
  - ◆ Integration
  - ◆ Redundancy and back-up
- ◆ Plan implementation & education
- ◆ Work the plan
- ◆ Test and adjusting the plan



## Statement of Understanding

- ◆ FP Managers require robust security systems that provides:
  - Visual monitoring of designated assets
  - An emergency/consequence response system
  - An integrated system that leverages existing and emerging assets to provide real-time information system for FP Managers
  - System must be built upon existing assets to keep costs down
  - System that is expandable over time built upon existing hardware



## Defining the Threat

- ◆ Assume an asymmetric threat
- ◆ High vulnerability
- ◆ Low Probability
- ◆ Catastrophic results if not handled quickly
- ◆ Daily crisis may pose as large a burden on our system as dealing with outside threat



JTS-LLC

## The 30,000 Foot View

**PLAN THE PLAN**

**WORK THE PLAN**

- Lights
- Barriers
- Secure Doors
- Alarmed openings
- Secure Alarm Devices
- Equipment Gauge devices
- Alarm Access Control System
- Security Cameras with PTZ and IR
- On location Digital Video Recording Device
- Out sourced Central Station Alarm Response Center
- In House Central Alarm & Gauge monitor & action station
- Network Client System to View remote Sites, access stored video
- Emergency Visual Response System integrated into video security system
- Redundant Communications pathways for Access, Alarm, and Video Systems
- Bio Read Access, Dual Technology, Vehicle 2 Driver System and Facial Recognition
- Anti-Tailgating Devices, Asset Tracking Systems, Discriminating Metal Detection systems
- Mandatory Continual training of all critical infrastructure employees with a defined threat action Plan
- Restructuring of all employee routine and planned activity to become non routine with redundant Backup
- Vendor Verification Systems with sign in (Bio) and / or escort coupled with vendor code and Password Programs
- An Anonymous and Reward Program for Suspicious Activity Alert and tips to better the holes in Security Management

**TEST SERVICE ADJUST THE PLAN**



*JTS-LLC*

## JTS Planning Process

- ◆ Step 1 Identify Critical Infrastructure and Mission Essential Vulnerabilities Areas (MEVA)
- ◆ Step 2 Draft the Global Critical Infrastructure Plan
- ◆ Step 3 Assess those identified needs vis a vis budget realities
- ◆ Step 4 Develop an implementation schedule
- ◆ Step 5 Begin implementation—adjust as required
- ◆ Step 6 Test each level continuously
- ◆ Step 7 Implement a maintenance plan for each level
- ◆ Step 8 Return to Step 1 to assure continued understanding of objectives



*JTS-LLC*

## Desired End-State

- Keep the individuals and assets safe and secure.
- Actively deter terrorism (Critical Infrastructure Protection), crime, and provide consequence management (CM) tools.
- Provide managers with visual monitoring tools and systems. These tools must be built against web-based programs which are designed to enhance user interactivity on a need to know basis.
- Provide immediate acknowledgement of unknown individuals or known individuals out of place in a protected facility or area.
- Provide immediate security and safety actions to stop a threat in progress.
- Implement, test, service and continually upgrade our technologies.
- Deliver our technical solutions for both high bandwidth wired and wireless environments.
- Find the right series of security solutions that provide the optimum solution at the most affordable cost.





*JTS-LLC*

## Important Technology Notes

- ◆ JTS-LLC does not opt for the snapshot delivery metaphor:
  - Security video with latency does not view objects within a protected area (only pieces of that focal view are seen).
  - Does not allow for scalability—unsuitable for emergency response.
- ◆ JTS-LLC believes wireless capability will revolutionize systems build-out and cost savings.





## Systems Components Overview

- ◆ Secure—all feeds must be secure and encoded.
- ◆ Robust—system must handle all the demands placed by end-state users.
- ◆ Scalable—must be able to add to the system without high cost or rebuild-out
- ◆ System must be as autonomous as possible

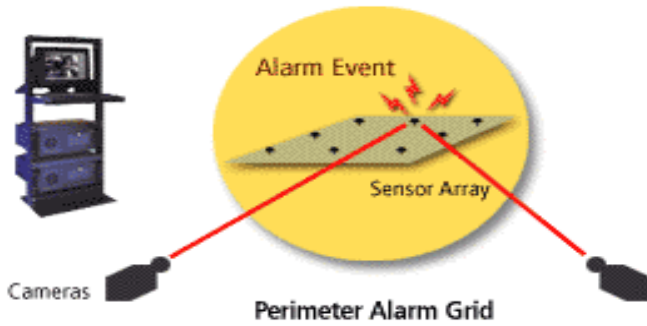


# Overview of JTS Objective System

## 1. Detection and Identification

### Alarm Zone 1

Local Monitoring, Camera Control,  
On-site Video Recorder, Playback & Analysis



### Alarm Zone 2



### Alarm Zone 3



### Alarm Zone 4



### Alarm Zone 5



### Alarm Notification

Local Authorities

State Authorities

Federal Authorities

## 2. Communication and Response

### Regional NOC

Alarm Alerts  
Monitoring  
Camera control  
Video Recording  
Playback & Analysis



## 3. Analysis

### WAN

Monitoring  
Camera control  
Video Recording  
Playback & Analysis



Local Access



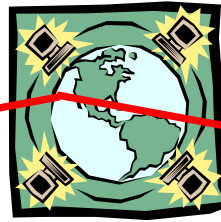
State Access



Federal Access

High Speed Transmission :  
FIBER, T-1, DSL, CABLE, WIRELESS

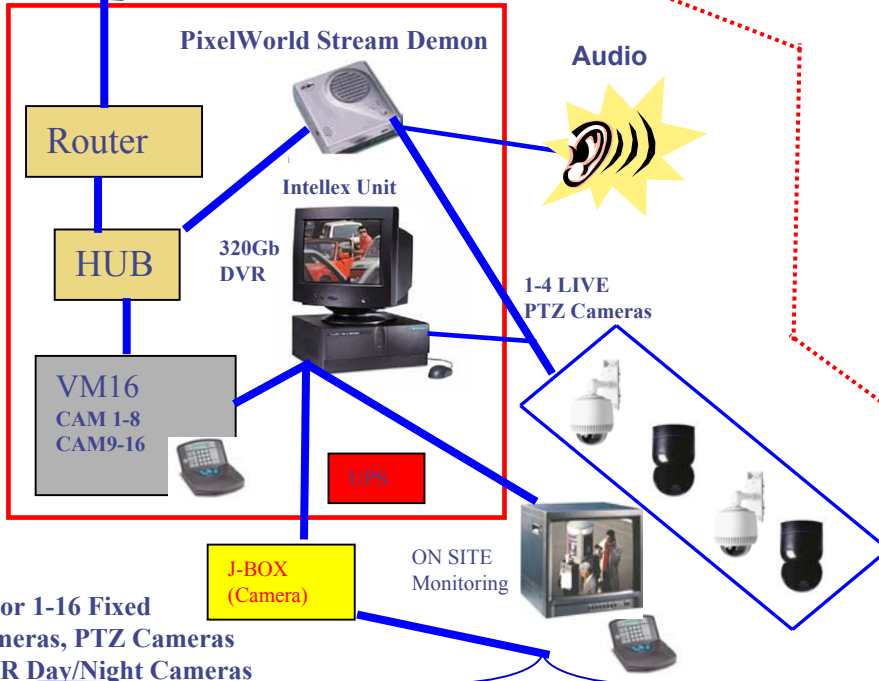
**DATA CENTER**



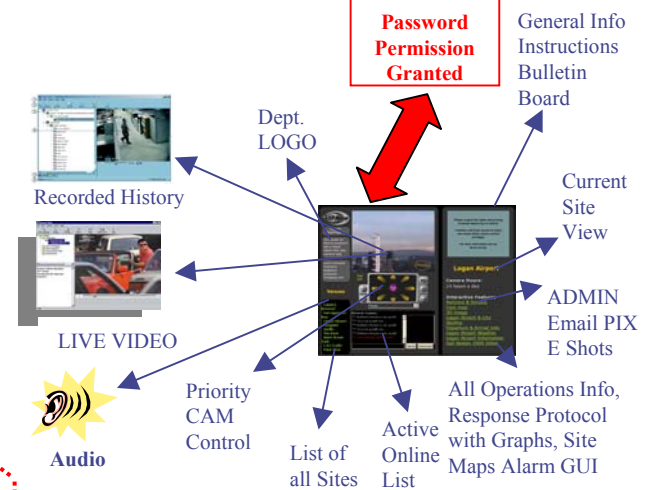
**SECURE INTERNET  
INTRANET  
LAN or WAN**

**All Departments on line and Live**

Operations Center  
Executive Offices  
IT Department  
HPD  
Security  
Military  
STATE  
Homeland Security



**Password  
Permission  
Granted**



**1-8 or 1-16 Fixed  
Cameras, PTZ Cameras  
or IR Day/Night Cameras**



Motion Detection Filter

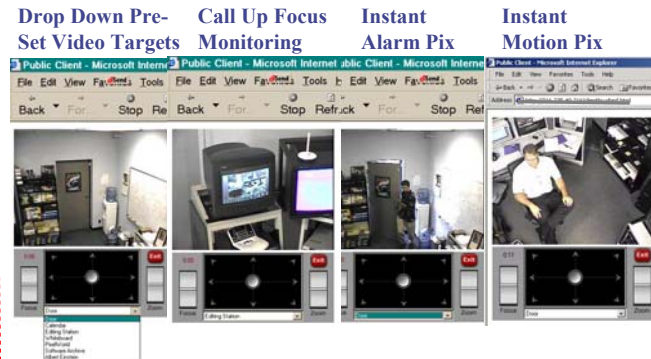


Perimeter Violation Filter



Missing Object Filter

**ALL ALARMS  
Monitored**





JTS-LLC

▪ **SEC Fixed Indoor Color or Black and White**

- Color best for day, Black and White for night
- Auto Iris and Auto Focus, Digital Cameras
- With Tamperproof Housing and conduit into Housing

▪ **SEC Fixed Outdoor Color or Black and White**

- Color best for day, Black and White for night
- Auto Iris and Auto Focus, Digital Cameras
- With Tamperproof Housing and conduit into Housing

▪ **SEC SpeedDome Ultra Dome V**

▪ **SEC SpeedDome Ultra Dome VI**

- The most advanced commercial indoor or outdoor dome on the market , specifications are clearly the best camera for the money.

▪ **EXT Integrated Day Night Camera (IDN)**

- The most advanced Interval Day Night camera with color by day, infrared even lit 400x400 feet night view by 10 year 85 IR array lamp.



- Lights
- Barriers
- Secure Doors
- Alarmed openings
- Secure Alarm Devices
- Equipment Gauge devices
- Alarm Access Control System

**Security Cameras with PTZ and IR**

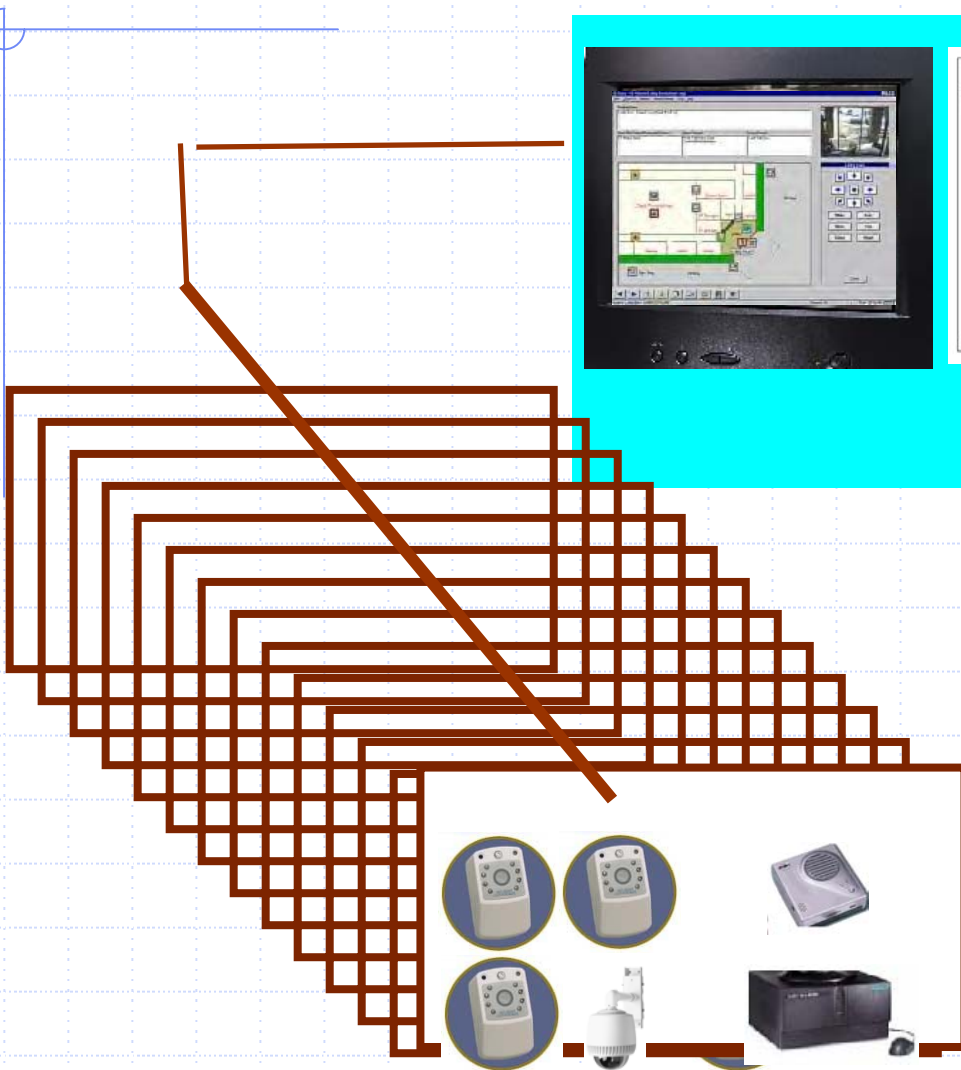
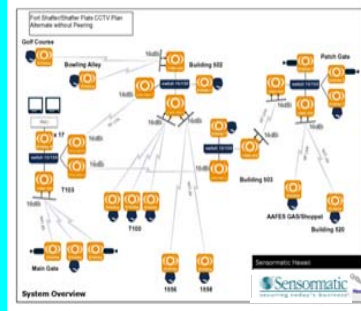
- On location Digital Video Recording Device
- Out sourced Central Station Alarm Response Center
- In House Central Alarm & Gauge monitor & action station
- Network Client System to View remote Sites, access stored video
- Emergency Visual Response System integrated into video security system
- Redundant Communications pathways for Access, Alarm, and Video Systems
- Bio Read Access, Dual Technology, Vehicle 2 Driver System and Facial Recognition
- Anti-Tailgating Devices, Asset Tracking Systems, Discriminating Metal Detection systems
- Mandatory Continual training of all critical infrastructure employees with a defined threat action Plan
- Restructuring of all employee routine and planned activity to become non routine with redundant Backup
- Vendor Verification Systems with sign in (Bio) and / or escort coupled with vendor code and Password Programs
- An Anonymous and Reward Program for Suspicious Activity Alert and tips to better the holes in Security Management





JTS-LLC

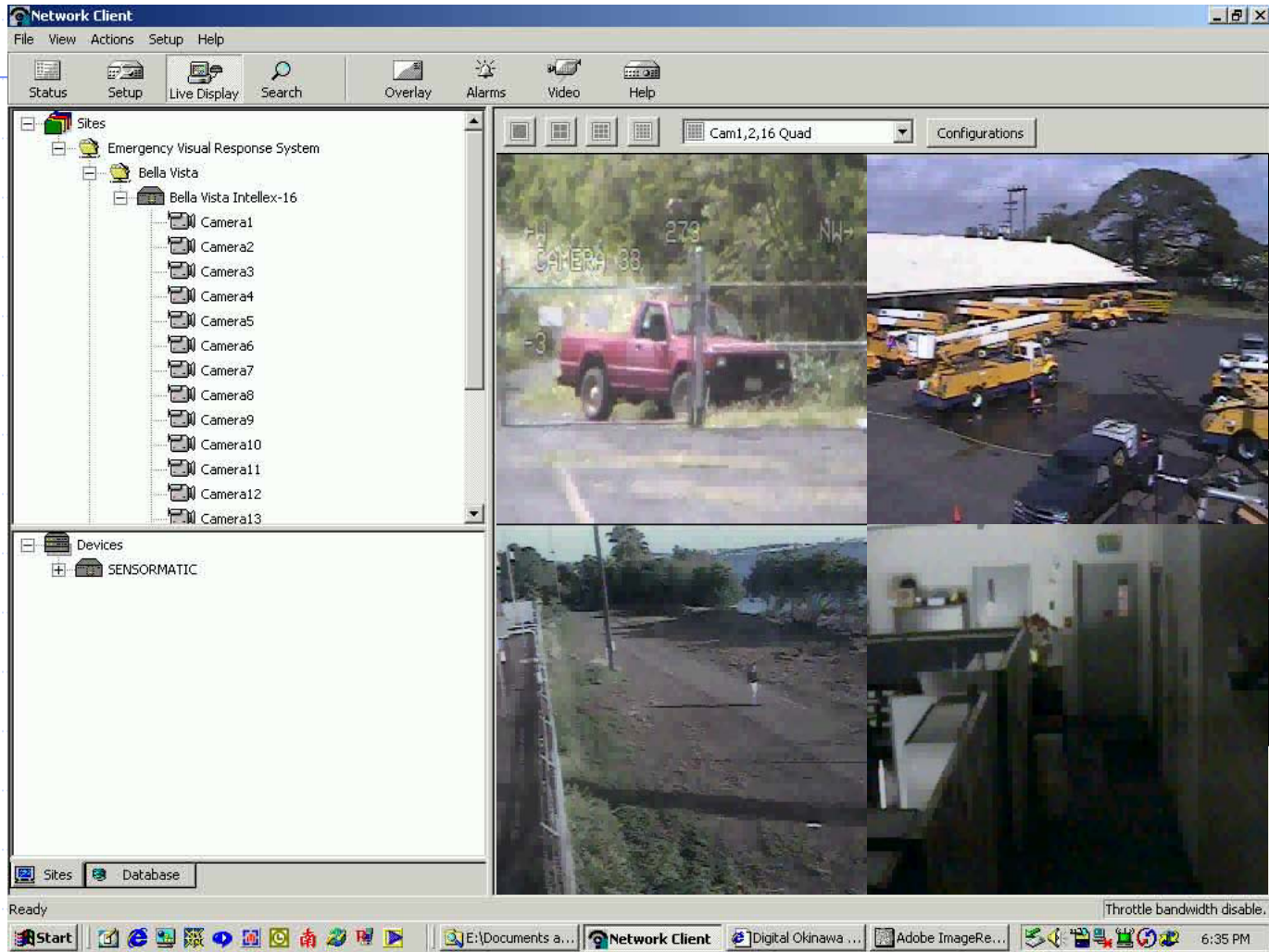
# Monitoring Remote Sites





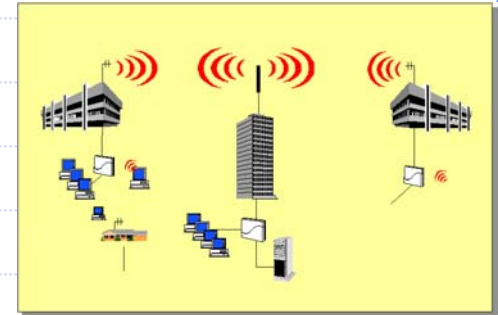
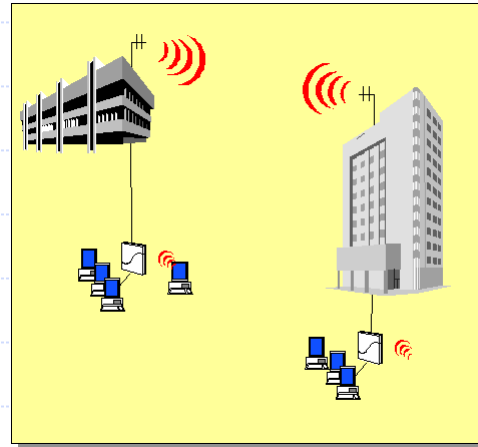
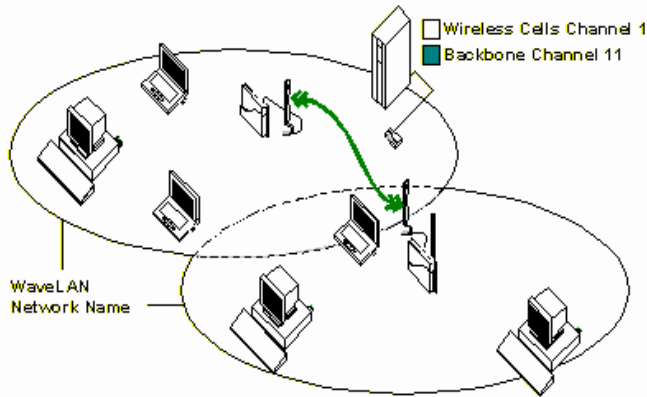


JTS-LLC





JTS-LLC



Barriers

- Secure Doors
- Alarmed openings
- Secure Alarm Devices
- Equipment Gauge devices
- Alarm Access Control System
- Security Cameras with PTZ and IR
- On location Digital Video Recording Device
- Out sourced Central Station Alarm Response Center
- In House Central Alarm & Gauge monitor & action station
- Network Client System to View remote Sites, access stored video
- Emergency Visual Response System integrated into video security system
- Redundant Communications pathways for Access, Alarm, and Video Systems**
- Bio Read Access, Dual Technology, Vehicle 2 Driver System and Facial Recognition
- Anti-Tailgating Devices, Asset Tracking Systems, Discriminating Metal Detection systems
- Mandatory Continual training of all critical infrastructure employees with a defined threat action Plan
- Restructuring of all employee routine and planned activity to become non routine with redundant Backup
- Vendor Verification Systems with sign in (Bio) and / or escort coupled with vendor code and Password Programs
- An Anonymous and Reward Program for Suspicious Activity Alert and tips to better the holes in Security Management

## Battery Back up Systems

## Wireless Transmission





*JTS-LLC*

# **OTHER THINGS to CONSIDER**



*JTS-LLC*

## Human Resources and Personnel Management

- System allows for seamless integration of HR functions into security system.
- Allows for positive control of enrollment.
- Allows for expeditions dis-enrollment.
- Can be used as part of the emergency notification system.



*JTS-LLC*

## Maintenance Operations

- System allows for remote monitoring of outlying maintenance locations or stations.
  - Used to monitor gages in remote locations.
  - Strategically place cameras allow for remote monitoring of any critical locations and sub-systems.
- Allows for positive control of visitors.
- Allows for on-line tracking of maintenance requirements.
- Used for emergency monitoring and control.



*JTS-LLC*

## Management Oversight

- Allows senior managers and leadership teams to remotely view any named location.
- Powerful Critical Infrastructure Plan enabling tool.
- Provides for on-line management of crisis situations.
- Provides for on-line consequence management.
- Allows for escalation of named events to be viewed by external authorities.



*JTS-LLC*

## **Full Service Security Integration for our Partners**

- Customized System Solutions -- Tailored to each client.
- Teaming with experts in Security Design, Streaming Content, and management of Information Technology.
- Integration of network topology to meet our client's needs.
- Appended and embedded Security Systems.
- Independent Web-Enabled Security Solutions



*JTS-LLC*

**JTS-LLC**

**Thomas Swindell**

**[tswindell@jts-llc.com](mailto:tswindell@jts-llc.com)**

**808-225-8827 (P)**

**808-261-8012 (F)**

**Securing Tomorrow--Today**

